

Deep Sea Mineral Recovery



Maersk Supply Service is a pioneer provider of offshore solutions in the Deep Sea Mineral Recovery industry. Combining more than 50 years of experience and knowledge as an offshore vessel provider, together with our integrated solutions model, Maersk Supply Service offers safe, reliable, and high standard full-scope solutions.

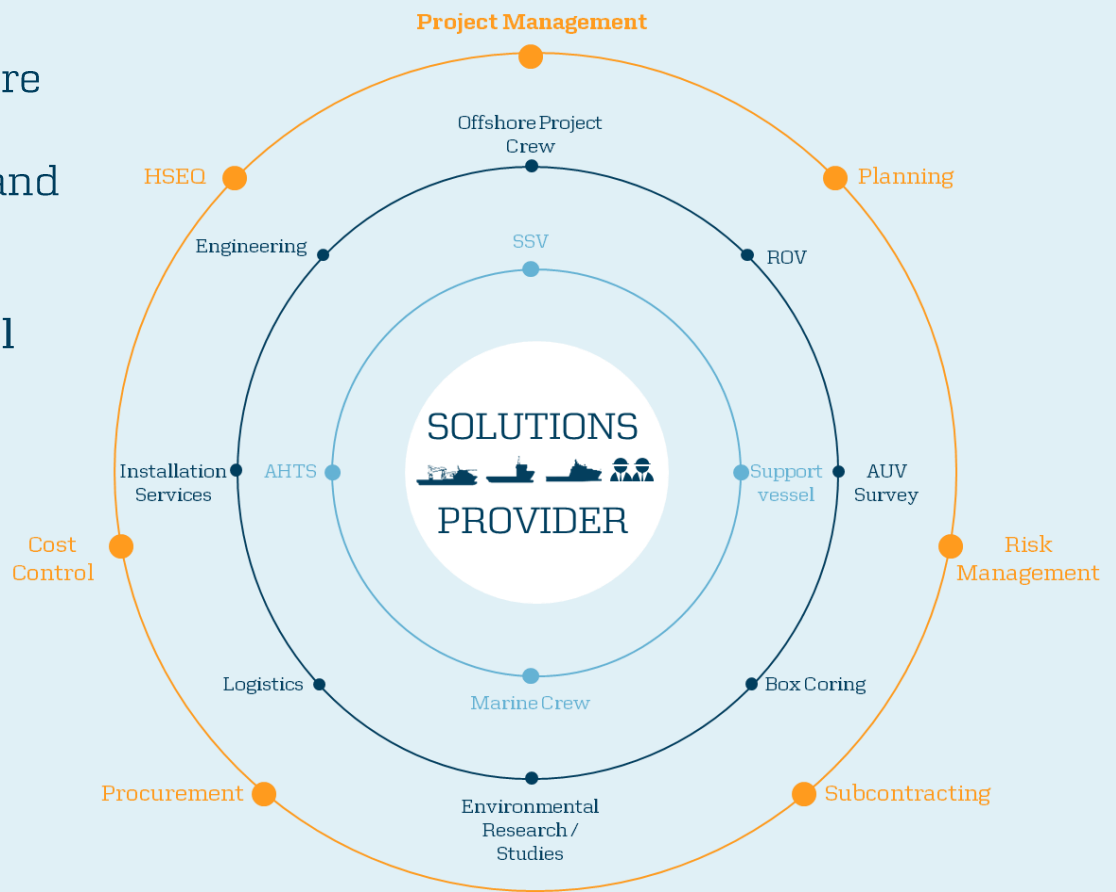
We have built our capabilities within mineral recovery by operating in alignment with the United Nations International Seabed Authority (ISA) recommendations and regulations, in some of the deepest waters; namely the Clarion-Clipperton Zone. Our experience herein allows us to approach solutions with an increased awareness, and thereby decrease your overall project risk.

SERVICE OFFERINGS:

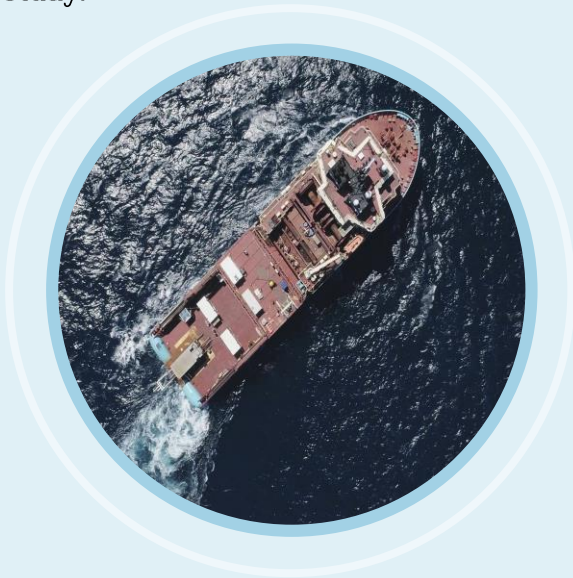
- Environmental studies
- Metocean studies
- Baseline studies:
 - Metals concentration study
 - Box coring
 - AUV bathymetry
 - Bulk sampling
 - Mooring
 - Prototype testing of deep sea equipment (e.g. Harvesters)
- Full project management incl. subcontracting, procurement, offshore personnel etc.



Leveraging more than 50 years of experience and assets from the offshore support vessel industry.



By leveraging our assets and experience, Maersk Supply Service is able to successfully deliver a full-scope solution model tailored to your specific needs. We have the capabilities of assisting in every step of the development phase, whether it be a small research excursion, full-scale base line study or proof-of-concept study.



OUR ASSETS:

- Experienced crew
- Experienced Project Management Team
- Large deck capacities
- DP2 and high standard reference systems
- Stable platform to deploy needed material onto, allowing expeditions to continue despite rough weather conditions
- Capabilities to run any survey

Maersk Supply Service – Provider of vessels and full service solutions to the energy sector

Maersk Supply Service is a leading provider of global offshore marine services. We bring more than 50 years of hands-on marine experience from vessel operations on a global scale, serving a broad range of clients in the energy sector.

Contact Information:

Sebastian Klasterer Toft
 Commercial Projects
 Email: Sebastian.Klasterer.Toft@maersksupplyservice.com
 Tlf: +45 61686612



Safe hands. Sound business.