

MAERSK WINNER

CRANED OFFSHORE SUPPORT VESSEL



MAERSK
SUPPLY SERVICE

Maersk Supply Service serves the offshore industry world wide with more than 60 vessels manned by approximately 2000 crew and supported by 220 onshore staff worldwide represented in all main deepwater regions.

The fleet includes craned offshore support vessels, anchor handling tug supply vessels, platform supply vessels and subsea support vessels.

Our focus areas are operations in ultra deep water, support of offshore platforms, rigs, barges as well as subsea services. Work scopes include amongst other things:

- Deep water anchor handling and mooring installations
- Subsea support/ROV support/Crane
- Ploughing/trenching operations
- General supply operations
- Special projects
- Rig moves





Vessel name / built:
Mærsk Winner / 2003

Technical specifications

Classification

| | |
|----------------|---|
| Classification | Lloyd's Register of Shipping +100 A1, Offshore Tug/Supply Ship, CG +LMC, UMS, DP(AA), PCR (91) (70) |
|----------------|---|

Deadweight/Tonnage

| | |
|---------------|----------|
| Deadweight | 3,900 ts |
| Gross tonnage | 6,655 gt |

Dimensions

| | |
|-------------------------|-------------------|
| Length o.a./p.p. | 90.32 m / 79.00 m |
| Breadth moulded | 23.00 m |
| Depth moulded | 9.50 m |
| Summer draft, max. | 7.80 m |
| Freeboard at max. draft | 1.70 m |

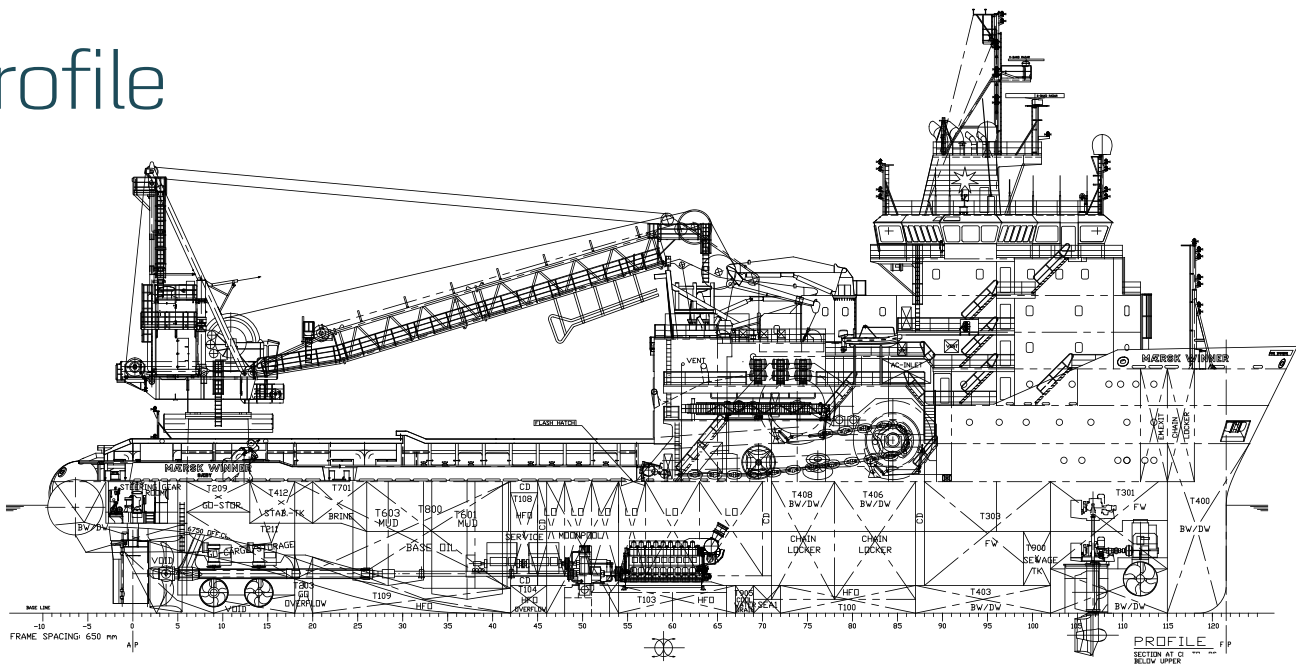
Accommodation

| | |
|----------|---|
| Capacity | 86 persons total incl. crew 18 single cabins 34 double cabins |
|----------|---|

Towing/Anchor handling equipment

| | |
|---------------------------|---|
| Make | Rauma |
| Type | Waterfall |
| Drums | 3 with spooling device |
| AH drum | Max. pull 625 ts and 850 ts static brake Capacity 14,600 m x 77 mm |
| Towing drums | 2 x max. pull 400 ts Capacity of each drum 3,700 m x 77 mm wire |
| Chain lockers | 2 x 230 m ³ & 2 x 330 m ³ |
| Pennant wire reel | Optional |
| Shark jaws | 2 x 700 ts Triplex |
| Stern roller | 2 x 3.25 m x 4.00 m |
| Strong point/Smit Bracket | 1,200 ts strong point and 200 ts Smit Bracket fitted on bow. Enables tandem towing and cross tensioning |
| Towing pins | 2 x 300 ts Triplex |

Profile



Moon pool

A moon-pool with dimensions 5200 mm x 4380 mm is installed in the centerline of the vessel accessible from the main deck. The moon-pool is equipped with a splash damping system reducing wave and water splash during operation. Dimensions incl. splash damping are 4160 mm x 3340 mm. During vessel transit and when moon-pool is not in use, a top and bottom hatch can be applied to keep the moon-pool dry. Various arrangements can be made to perform lifts through the moon-pool either by vessels 200 ton crane or by vessels winches with loads of up to 625 ts.

MOB boat

Esvagt MOB ALU 460

Deck load capacities

| | |
|-------------------|--|
| Deck load | 2,500 ts |
| Deck length | 42.10 m |
| Deck breadth | 19.50 m |
| Deck area | 765 m ² (crane pedestal area subtracted) |
| Deck strength | Aft 15 ts/m ² , Fore 10 ts/m ² |
| Cargo rail height | 3.00 m |

ROV deck

| | |
|---------------------|------------------------|
| ROV deck (optional) | 165-276 m ² |
|---------------------|------------------------|

Deck equipment

| | |
|----------------|---|
| Capstans | 2 x 15 ts |
| Cranes | 2 x 15 ts/10 ts at outreach 9.00 m/14.00 m at max. Beaufort 2 |
| Tugger winches | 2 x 15 ts |

Propulsion/Bollard pull

| | |
|-------------------|---|
| Main engines | 4 x Krupp MAK |
| Total BHP | 23,480 |
| Bollard pull | 260 ts |
| Thrusters forward | 1 x 2,040 BHP Tunnel 1 x 1,770 BHP Azimuth |
| Thrusters aft | 2 x 1,200 BHP Tunnel |

Speed/Consumption

| | |
|------------------------|-----------------------------------|
| Max. speed/consumption | 16.2 knots at abt. 62 ts/24 hours |
| Eco. speed/consumption | 12.0 knots at abt. 32 ts/24 hours |

Dynamic Positioning

| | |
|---------------------|-----------------------------|
| Dynamic positioning | DP 2 |
| Reference system | DGPS, Laser fan beam, HIPAP |

Liquid capacities

| | |
|---------------------|--|
| Base oil | 224 m ³ |
| Brine | 364 m ³ |
| Drill/Ballast water | 2,600 m ³ |
| Fresh water | 760 m ³ |
| Fuel | G.O./IFO40 1,105 m ³ Dedicated G.O. 1,315 m ³ |
| Oil based mud | 605 m ³ |

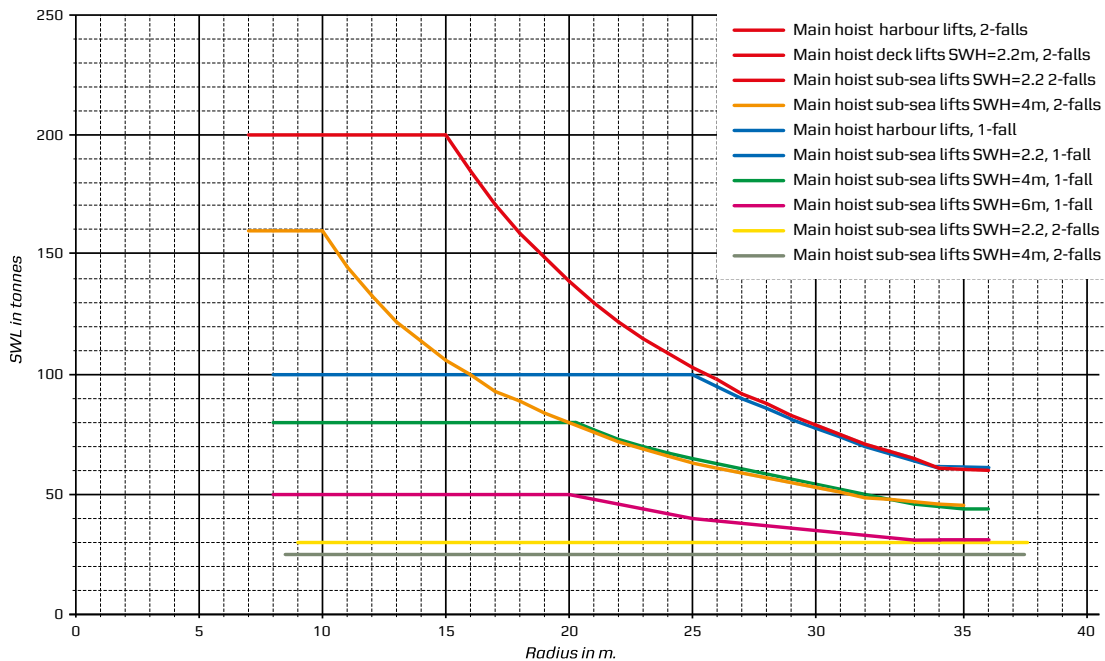
Cargo discharge rates

| | |
|-------------|---------------------------------------|
| Base oil | 125 m ³ /hour at 9 bar |
| Brine | 2 x 75 m ³ /hour at 24 bar |
| Drill water | 250 m ³ /hour at 9 bar |
| Fresh water | 250 m ³ /hour at 9 bar |
| Gas oil | 250 m ³ /hour at 9 bar |
| Mud | 2 x 75 m ³ /hour at 24 bar |

Offshore crane (heave compensated)

| | |
|--|--|
| Main crane | KENZ EHC200/4500 O.S. AHC DMA regulations 12 |
| Lift capacity (double fall) | 200 ts |
| Lift capacity (single fall) | 100 ts |
| Lift radius max. (double fall) | 34.80 m |
| Lift radius min. (double fall) | 7.00 m |
| Lift radius max. (single fall) | 36.00 m |
| Lift radius min. (single fall) | 8.50 m |
| Main hook working depth (single fall) | 2,000 m |
| Main hook working depth (double fall) | 1,000 m |
| Whip hoist working depth (single fall) | 600 m |
| Whip hoist working depth (double fall) | 300 m |
| Heave compensation | 0 t to 200 ts (minimum 90 pct damping) |
| Luffing time | 120 seconds (no load) 270 seconds (full load) |
| Slewing speed | 0,33 RPM (with max. load) 0,66 RPM (whip hoists) |
| Redundancy systems | All essential systems fully redundant and safe load indicators/limiters built in |
| Pedestal height | 4.50 m |
| Crane placement | The crane is placed on starboard side aft |
| Crane work area | The crane can work most of vessels deck area, over starboard side and over the stern The reach over port side is possible at limited capacity |
| Free height under boom in rest pos. | About 7.40 m with crane fully rested for sea transit |
| Work under crane | Vessel can perform full anchor handling and towing tasks with no limitations |

LOAD/RADIUS CURVES





For further information and enquiries please contact:

DENMARK
COPENHAGEN

Visiting address: **Postal address:**
Gl. Lundtoftevej 7 50 Esplanaden
2800 Lyngby 1098 Copenhagen K
Denmark Denmark

Phone: +45 3363 3363
Duty phone: +45 4054 3363

E-mail:
MSSCOMSOU@maersk.com covering
West Africa, South America and Caribbean
MSSCOMNOR@maersk.com covering all other areas
MSSCOMPRJ@maersk.com covering subsea work
and special projects world wide.

UNITED KINGDOM
ABERDEEN

Maersk Supply Service UK Limited
City Wharf
Ship Row
Aberdeen
AB11 5BY
United Kingdom

Phone: +44 1224 243243
E-mail: **ABZMSS@maersk.com**

CANADA
ST. JOHN'S

Seabase Limited
Suite 300, Baine Johnston Centre
10 Fort William Place
St. John's, Newfoundland
A1C 1K4
Canada

Phone: +1 709 737 0600
E-mail: **PAUL.LOCKE@seabase.ca**

BRAZIL
RIO DE JANEIRO

Maersk Supply Service Apoio Maritimo Ltda.
Praia do Flamengo 154, 2nd Floor
22210-906 Rio de Janeiro - RJ
Brazil

Phone: +55 21 3032 2800
E-mail: **RIOMSSCOM@maersk.com**



SINGAPORE
SINGAPORE

Maersk Supply Service
10-00 Southpoint
200 Cantonment Road
Singapore 089763
Republic of Singapore

Phone: +65 6323 8315
E-mail: **SINMSS@maersk.com**

EGYPT
CAIRO

Maersk Egypt SAE
City Stars, Star Capital A2, 13th Floor
Omar Ibn El Khattab Street
Heliopolis
Cairo
Egypt

Phone: +20 2 480 1010
E-mail: **AMR.ELBIBANY@maersk.com**

ANGOLA
LUANDA

Maersk (Angola) Lda.
Rua Major Kanhangulo, no. 290 R/C
Largo do Ambiente
Luanda
Angola

Phone: +244 927 673 852
E-mail: **LADMSS@maersk.com**

NIGERIA
LAGOS

Maersk Nigeria Ltd.
6th Floor, Kazuma Plaza
2-4 Ede Street
Apapa
Lagos
Nigeria

Phone: +234 803 4210 023
E-mail: **LOSMSS@maersk.com**



This brochure is intended for general information only.
Maersk Supply Service makes no warranties about accuracy or completeness of any information contained herein.