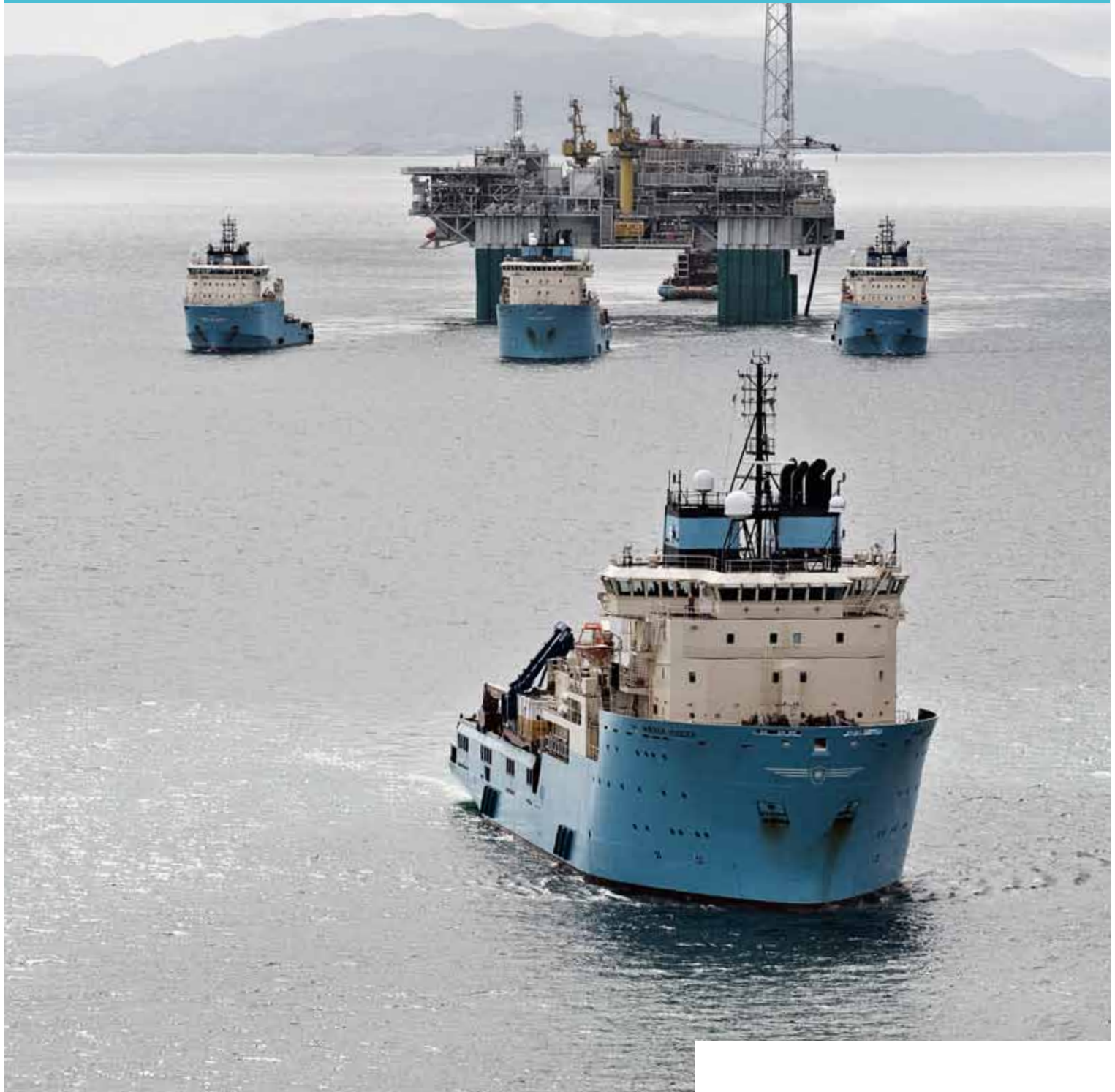


FLEET LIST

OFFSHORE SUPPORT VESSELS



MAERSK
SUPPLY SERVICE

Maersk Supply Service serves the offshore industry world wide with more than 60 vessels manned by approximately 2000 crew and supported by 220 onshore staff worldwide represented in all main deepwater regions.

The fleet includes craned subsea support vessels, anchor handling tug supply vessels, platform supply vessels and field and subsea support vessels.

Our focus areas are operations in ultra deep water, support of offshore platforms, rigs, barges as well as subsea services. Work scopes include amongst other things:

- Deep water anchor handling and mooring installations
- Subsea support/ROV support/Crane
- Support of renewables industry
- Ploughing/trenching operations
- General supply operations
- Special projects
- Rig moves

In safety we are on a journey where our destination is to achieve zero incidents. Our HSE Policy is clear; to conduct our activities in a manner that protects the health and safety of our employees and those that work under our direction, and that our vessel operations and employees do not harm the health and safety of others. We are committed to the protection and conservation of the environment and place high priority on environmental considerations in managing our business. In all these areas we strive for continuous, socially responsible improvement in our performance. And the ultimate goal is zero incidents.

Our HSE goals cannot be achieved without total commitment from all our employees, both in our fleet and in our shore organisation. As a business, we look to each and every one to follow the rules and procedures and to assess the risks at each stage of work and reassess where change has occurred. And none of this will happen unless we stand up and challenge unsafe acts amongst ourselves or our colleagues or others and, where due, properly recognise and praise positive efforts.

In so doing we will live up to another important policy statement which is to provide flawless service; meeting our customers' requirements the first time, every time.

When we have accidents we learn from our mistakes or omissions so we can be confident we continue to make improvements in our performance. We will STOP work or the work of others if we see a risk of injury or loss. Our customers are very straight with us. They expect us to take leadership in safety and environmental matters and prove we can lead the field.

Our safety culture both in the fleet and onshore has been rapidly improving over recent years. We conduct surveys to assess our safety culture which help us adjust our communication to each other and show us the areas where more can be done. Our Safety Observation Card system sits alongside our Near Miss reporting system showing us where we can intervene before someone gets hurt. Other initiatives are taken annually and are described in our yearly HSEQ Plan. The plan is measured, reviewed and renewed each year.

Protection of the environment is of the utmost concern to us. We carefully assess the impact we make on our environment and then take action to reduce where we can. Emissions, use of chemicals, discharge of pollutants are all focus areas for us.

Our Company Core Values support and encourage us to seek continuous improvement in our management of safety and environmental performance. The oldest of them all is especially relevant to us in that journey. It is that nothing should affect us that could have been prevented with timely and constant care.

Our stakeholders watch our performance closely and they want us to succeed. Our vision is to be the customers' first choice and only when we get safety right can we be sure of that. We will practice constant care at all times.



Carsten Plougmann Andersen
CEO Maersk Supply Service

Index

P 4 Craned Subsea Support Vessels

	Type	Crane
5	A-Type	200 ts
5	Mærsk Winner	200 ts
6	Mærsk Nomad	145 ts

P 7 Anchor Handling Tug Supply Vessels

	Type	Bollard Pull
8	Mærsk Laser / RAHS	269 ts
8	L-Type	261-268 ts
9	A-Type	257-282 ts
9	B-Type	220-240 ts
10	S-Type	198-214 ts
10	D-Type	218 ts
11	H-Type	198 ts
11	M-Type	161-174 ts
12	P-Type (L)	198-204 ts
13	P-Type (S)	180 ts
13	Asenav 171+172	min. 150 ts
14	T-Type	165-181 ts
14	CH-Type	160-173 ts
15	C-Type	160 ts
15	R-Type (L)	151 ts
16	R-Type (S)	140 ts
16	HUSKY-Type	120-127 ts

P 17 Platform Supply Vessels

	Type	Deck area:
18	N-Type	910 m ² & 720 m ²
19	F-Type	907 m ²
19	V-Type	940 m ²

P 20 Field and Subsea Support Vessels

	Type	Bollard Pull
21	R-Type	110 ts

P 22 A-Frame

P 23 ROV/Mezzanine decks



Craned Subsea Support Vessels



A-Type

23,480 BHP, 271 ts Bollard Pull

LOA / Beam	90.30 m / 23.00 m
Draft	7.80 m max loaded
Deadweight	3,740 ts
Deck capacity	2,500 ts
ROV deck (optional)	138 m ² /289 m ²
Free deck	42.10 m x 19.50 m / 770 m ² (crane pedestal area subtracted)
Brine	259 m ³
Drill/ballast water	2,561 m ³
Fresh water	760 m ³
Fuel	G.O./IFO40 1,080 m ³ Dedicated G.O. 970 m ³
Thrusters	Bow 1 x 2,040 BHP Azimuth 1 x 1,770 BHP Stern 2 x 1,200 BHP
AHT winches	1 x 625 ts & 2 x 400 ts drums
Chain lockers	2 x 230 m ³ & 2 x 331 m ³
Shark jaws	2 x 700 ts Triplex
Stern roller	2 x 3.25 m x 4.00 m
Moon pool	4.10 m x 3.30 m free passage inside dampers
Accommodation	86
Dynamic Positioning	DP 2
Crane	Hydramarine 200 ts shore lift 200 ts at 1,500 m water depth 150 ts at 2,500 m water depth Fully active heave compensated

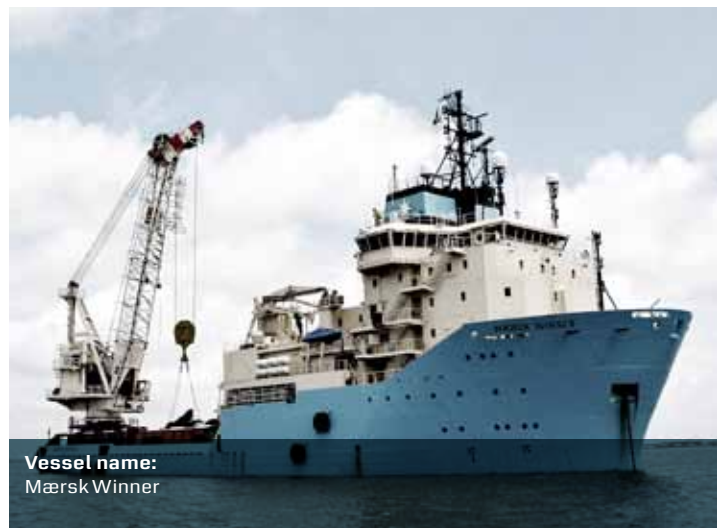


Vessel names:
Mærsk Attender
Mærsk Achiever

Mærsk Winner

23,480 BHP, 260 ts Bollard Pull

LOA/Beam	90.30 m / 23.00 m
Draft	7.80 m max loaded
Deadweight	3,900 ts
Deck capacity	2,500 ts
ROV deck (optional)	165-276 m ²
Free deck	42.10 m x 19.50 m / 765 m ² (crane pedestal area subtracted)
Base oil	224 m ³
Brine	364 m ³
Drill/ballast water	2,600 m ³
Fresh water	760 m ³
Fuel	G.O./IFO40 1,105 m ³ Dedicated G.O. 1,315 m ³
Oil based mud	605 m ³
Thrusters	Bow 1 x 2,040 BHP Azimuth 1 x 1,770 BHP Stern 2 x 1,200 BHP
AHT winches	1 x 625 ts & 2 x 400 ts drums
Chain lockers	2 x 230 m ³ & 2 x 330 m ³
Shark jaws	2 x 700 ts Triplex
Stern roller	2 x 3.25 m x 4.00 m
Moon pool	4.10 m x 3.30 m free passage inside dampers
Accommodation	86
Dynamic Positioning	DP 2
Crane	Kenz 200 ts shore lift 200 ts at 1,000 m water depth 100 ts at 2,000 m water depth Fully active heave compensated

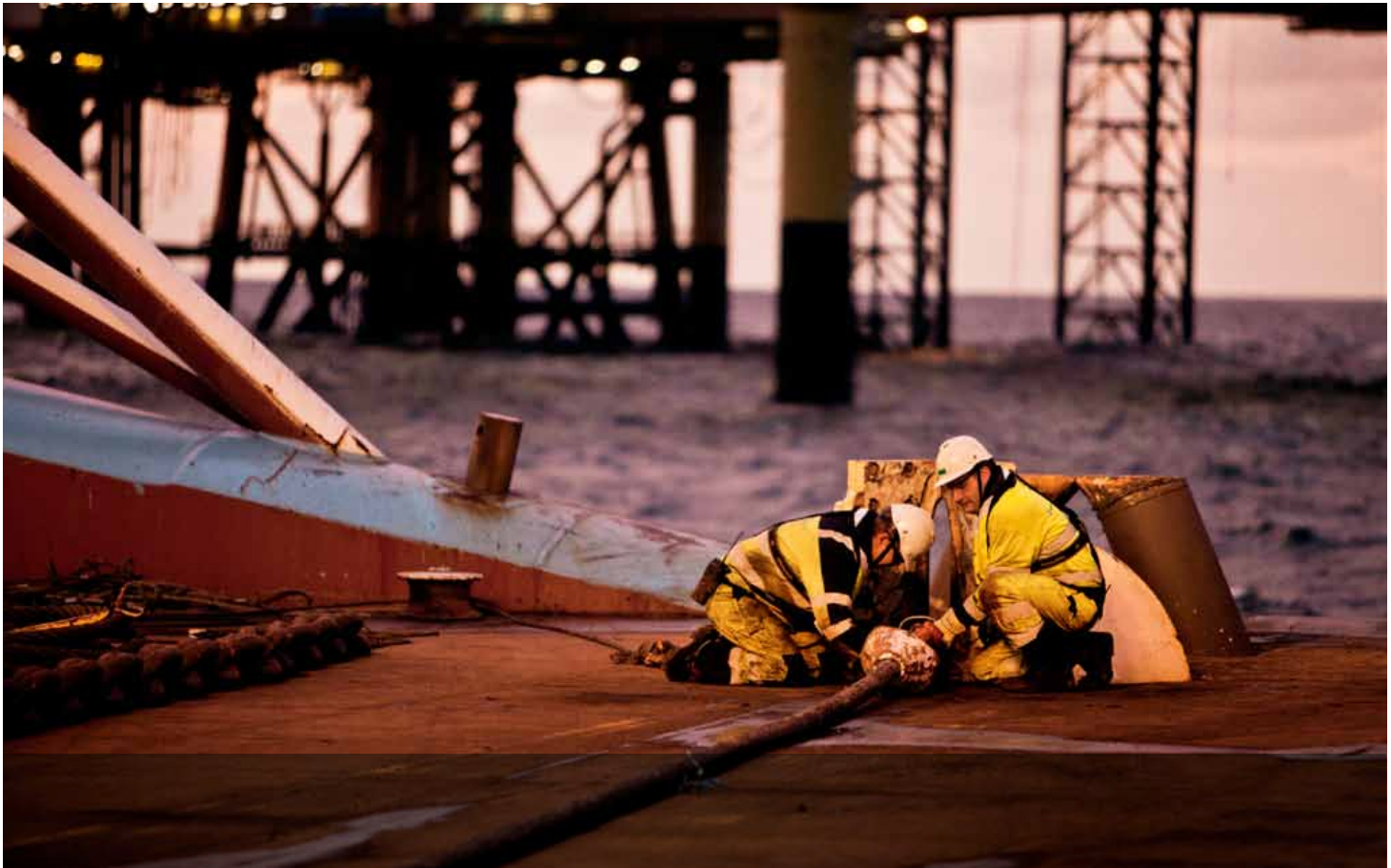
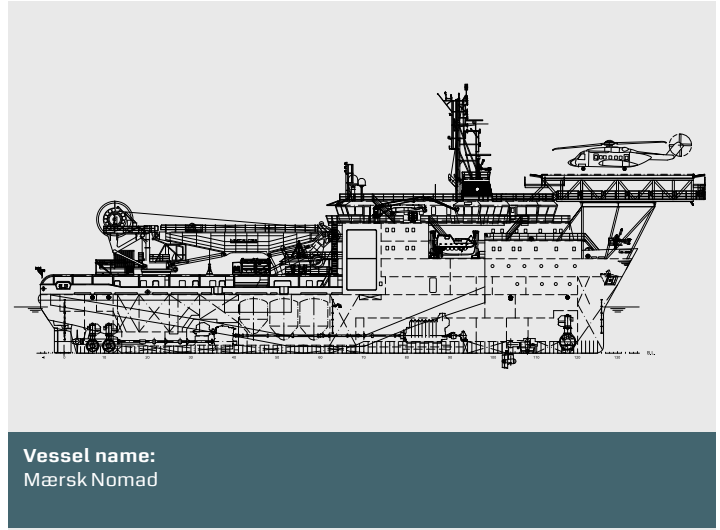


Vessel name:
Mærsk Winner

Mærsk Nomad

4,200 DWT, 775 m² deck

LOA/Beam	90.15 m / 22.20 m
Draft	7.10 m max loaded
Deadweight	4,200 ts
Deck capacity	1,200 ts
Free deck	42.50 m x 18.80 m / 775 m ² (crane pedestal area subtracted)
Base oil	460 m ³
Brine	1,060 m ³
Drill/ballast water	3,400 m ³
Dry bulk	298 m ³
Fresh water	1,320 m ³
Fuel	1,215 m ³
Oil based mud	820 m ³
Oil recovery	990 m ³
Main engines	10,400 BHP
Thrusters	Bow 1 x 1,200 BHP Azimuth 1 x 1,200 BHP Stern 2 x 800 BHP
Accommodation	50
Firefighting	FiFi 1
Dynamic Positioning	DP 2
Crane	Cargotech 190 ts shore lift 145 ts at 2,000 m water depth Fully active heave compensated
Helideck	CAP 437 compliant Diameter 22.8 m Max. 14.6 ts take-off weight
DNV notation	Clean Design
SPS Code	compliant



Anchor Handling Tug Supply Vessels



Remote Anchor Handling System Mærsk Laser

23,500 BHP, 269 ts Bollard Pull

LOA/Beam	90.30 m / 23.00 m	
Draft	7.80 m max loaded	
Deadweight	4,500 ts	
Deck capacity	2,080 ts	
Free deck	42.10 m x 19.50 m / 800 m ²	
Base oil	899 m ³ *	
Brine	752 m ³ *	
Drill/ballast water	3,064 m ³	
Fresh water	618 m ³	
Fuel	1,825 m ³ *	
Oil based mud	602 m ³ *	
Thrusters	Bow	2 x 2,040 BHP
	Stern	2 x 1,200 BHP
AHT winches	2 x 500 ts drums	
Secondary winches	2 x 145 ts	
Chain lockers	2 x 338 m ³	
Shark jaws	2 x 700 ts Triplex	
Stern roller	2 x 3.25 m x 4.00 m	
Accommodation	70	
Dynamic Positioning	DP 2	
Remote Anchor Handling System	The remote anchor handling system is designed for a totally man free deck where all functions can be remotely controlled by highly advanced force feedback robotic manipulators, automatic pennant catchers and automatic handing back of anchor pennants. Specially developed connection links are designed to replace conventional connection devices to eliminate human intervention to the highest possible extend.	

DNV notation Clean Design



Vessel name:
Mærsk Laser

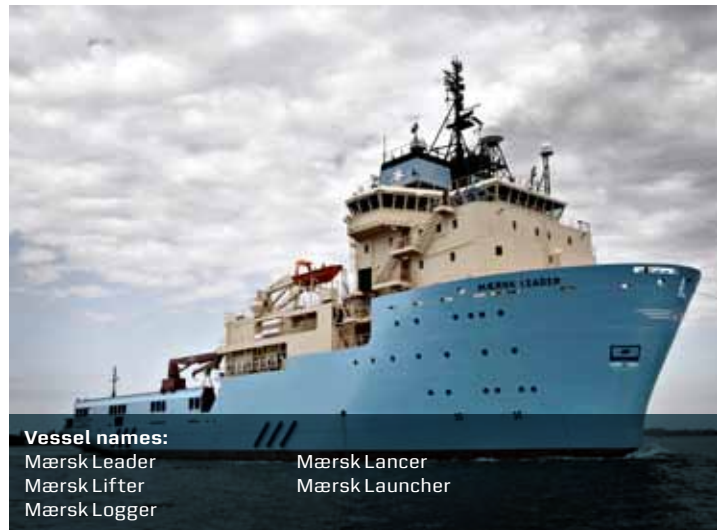
* Max capacity based on full multi purpose cargo tanks availability.

L-Type

23,500 BHP, 261-268 ts Bollard Pull

LOA / Beam	90.30 m / 23.00 m	
Draft	7.80 m max loaded	
Deadweight	4,500 ts	
Deck capacity	2,080 ts	
Free deck	42.10 m x 19.50 m / 800 m ²	
Base oil	899 m ³ *	
Brine	752 m ³ *	
Drill/ballast water	3,125 m ³	
Fresh water	618 m ³	
Fuel	1,894 m ³ *	
Oil based mud	602 m ³ *	
Thrusters	Bow	2 x 2,040 BHP
	Stern	2 x 1,200 BHP
AHT winches	2 x 500 ts drums	
Secondary winches	2 x 145 ts (Mærsk Lancer)	
	1 x 145 ts	
Chain lockers	2 x 338 m ³	
Shark jaws	2 x 700 ts Triplex	
Stern roller	2 x 3.25 m x 4.00 m	
Accommodation	70	
Dynamic Positioning	DP 2	

DNV notation Clean Design



Vessel names:
Mærsk Leader Mærsk Lancer
Mærsk Lifter Mærsk Launcher
Mærsk Logger

* Max capacity based on full multi purpose cargo tanks availability.

A-Type

23,500 BHP, 257-282 ts Bollard Pull

LOA/Beam	90.30 m / 23.00 m	
Draft	7.80 m max loaded	
Deadweight	4,500 ts	
Deck capacity	2,500 ts	
Free deck	42.10 m x 19.50 m / 800 m ²	
Base oil	224 m ³	
Brine	364 m ³ (Maersk Assister and Maersk Advancer)	
	403 m ³ (Mærsk Assister)	
Drill/ballast water	2,540 m ³	
Fresh water	760 m ³	
Fuel	IFO40 1,100 m ³	
	Dedicated G.O. 1,140 m ³	
Oil based mud	600 m ³	
Thrusters	Bow	1 x 2,040 BHP
	Azimuth	1 x 1,770 BHP
	Stern	2 x 1,200 BHP
AHT winches	1 x 625 ts & 2 x 400 ts drums	
Secondary winches	1 x 170 ts + 1 x 145 ts (Maersk Advancer and Maersk Assister)	
Chain lockers	2 x 230 m ³ & 2 x 330 m ³	
Shark jaws	2 x 700 ts Triplex	
Stern roller	2 x 3.25 m x 4.00 m	
Accommodation	59 (Mærsk Assister)	
	70 (Maersk Advancer and Maersk Assister)	
Dynamic Positioning	DP 2	
A-Frame	Optional on Maersk Advancer and Mærsk Assister	



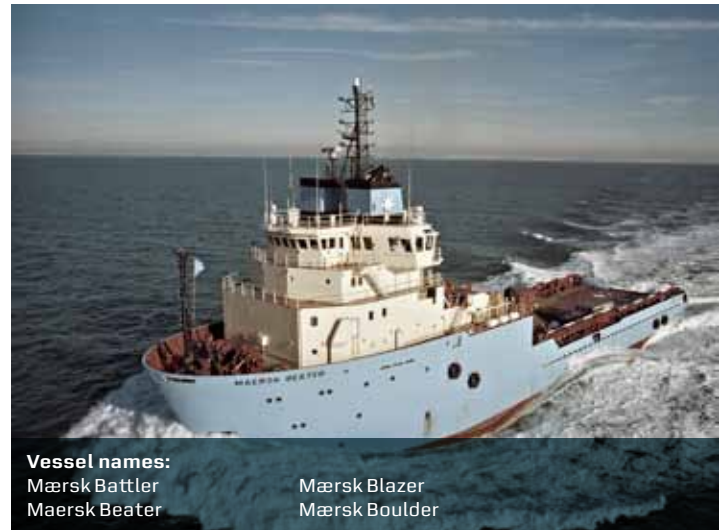
Vessel names:
Mærsk Assister
Mærsk Asserter

Maersk Advancer

B-Type

20,000 BHP, 220-240 ts Bollard Pull

LOA/Beam	84.60 m / 18.80 m	
Draft	7.50 m max loaded	
Deadweight	4,201 ts	
Deck capacity	1,700 ts	
Free deck	43.00 m x 16.00 m / 680 m ²	
Base oil	230 m ³ (Mærsk Boulder n/a)	
Brine	483 m ³ (Mærsk Boulder 411 m ³)	
Drill/ballast water	1,485 m ³ (Mærsk Boulder 2,093 m ³)	
Dry bulk	163 m ³ (Mærsk Blazer 300 m ³)	
Fresh water	715 m ³ (Mærsk Boulder 1,551 m ³)	
Fuel	1,880 m ³	
Oil based mud	600 m ³ (Mærsk Boulder n/a)	
Thrusters	Bow	1 x 1,200 BHP
	Azimuth	1 x 1,200 BHP
	Stern	2 x 800 BHP
AHT winches	1 x 500 ts & 2 x 400 ts drums	
Secondary winches	2 x 170 ts (Mærsk Battler)	
	2 x 140 ts (Mærsk Boulder)	
	2 x 120 ts (Mærsk Blazer)	
Chain lockers	2 x 201 m ³ & 2 x 179 m ³	
Shark jaws	2 x 700 ts Triplex	
Stern roller	2 x 3.25 m x 4.00 m	
Accommodation	36	
Dynamic Positioning	DP 2 (Mærsk Battler, Maersk Beater and Mærsk Blazer)	
	DP 1 (Mærsk Boulder)	
A-Frame	Optional on Mærsk Battler, Mærsk Blazer and Mærsk Boulder	



Vessel names:
Mærsk Battler
Maersk Beater

Mærsk Blazer
Mærsk Boulder

S-Type

18,250 BHP, 198-214 ts Bollard Pull

LOA/Beam	82.00 m / 18.80 m	
Draft	7.50 m max loaded	
Deadweight	3,470 ts	
Deck capacity	1,500 ts	
Free deck	45.80 m x 15.39 m / 690 m ²	
Base oil	240 m ³	
Brine	315 m ³	
Drill/ballast water	1,260 m ³	
Dry bulk	280 m ³	
Fresh water	748 m ³	
Fuel	1,544 m ³	
Oil based mud	496 m ³	
Thrusters	Bow	1 x 1,200 BHP
	Azimuth	1 x 1,200 BHP
	Stern	1 x 1,200 BHP
AHT winches	3 x 400 ts drums	
Secondary winch	1 x 60 ts (Maersk Server)	
Chain lockers	2 x 289 m ³	
Shark jaws	2 x 350 ts Triplex	
Stern roller	2 x 3.00 m x 3.00 m	
Accommodation	30	
Dynamic Positioning	DP 2 / DP 1	



Vessel names:
Maersk Searcher
Maersk Seeker
Maersk Shipper

Maersk Supplier
Maersk Supporter
Maersk Server

D-Type

18,000 BHP, 218 ts Bollard Pull

LOA/Beam	89.30 m / 20.60 m	
Draft	7.50 m max loaded	
Deadweight	4,050 ts	
Deck capacity	2,100 ts	
Free deck	44.00 m x 17.00 m / 750 m ²	
Base oil	260 m ³ *	
Brine	460 m ³ *	
Drill/ballast water	1,380 m ³ incl. chain lockers	
Dry bulk	282 m ³	
Fresh water	800 m ³	
Fuel	2,770 m ³ *	
Oil based mud	480 m ³ *	
Thrusters	Bow	1 x 1,200 BHP
	Azimuth	1 x 1,200 BHP
	Stern	2 x 950 BHP
AHT winches	3 x 400 ts drums	
Chain lockers	2 x 263 m ³	
Shark jaws	2 x 700 ts Triplex	
Stern roller	2 x 3.00 m x 3.00 m	
Accommodation	56	
Firefighting	Fifi 1	
Standby/Rescue	300 survivors	
Dynamic Positioning	DP 2	



Vessel names:
Maersk Dispatcher
Maersk Detector

* Max capacity based on full multi purpose cargo tanks availability.

H-Type

17,500 BHP, 198 ts Bollard Pull

LOA/Beam	80.00 m / 18.00 m	
Draft	6.60 m max loaded	
Deadweight	2,600 ts	
Deck capacity	1,500 ts	
Free deck	35.00 m x 15.50 m / 530 m ²	
Base oil	210 m ³ /215 m ³	
Brine	500 m ³	
Drill/ballast water	1,135 m ³	
Dry bulk	283 m ³	
Fresh water	505 m ³	
Fuel	1,130 m ³	
Oil based mud	445 m ³	
Thrusters	Bow	1 x 1,200 BHP
	Azimuth	1 x 1,200 BHP
	Stern	1 x 1,200 BHP
AHT winches	2 x 500 ts drums	
Secondary winches	2 x 138 ts	
Chain lockers	4 x 136 m ³	
Shark jaws	2 x 700 ts Triplex	
Stern roller	2 x 3.00 m x 3.50 m	
Accommodation	27	
Dynamic Positioning	DP 1	



Vessel names:
Maersk Handler
Maersk Helper

M-Type

16,200 BHP, 161-174 ts Bollard Pull

LOA/Beam	82.00 m / 18.40 m	
Draft	6.90 m max loaded	
Deadweight	2,395 ts	
Deck capacity	1,200 ts	
Free deck	35.00 m x 14.80 m / 510 m ²	
Base oil	440 m ³	
Brine	263 m ³	
Drill/ballast water	418 m ³	
Dry bulk	403 m ³	
Fresh water	527 m ³	
Fuel	1,954 m ³ (Mærsk Master)	
	1,191 m ³ (Maersk Mariner)	
Oil based mud	489 m ³ (Mærsk Master)	
	198 m ³ (Maersk Mariner)	
Oil recovery	1,053 m ³ (Maersk Mariner)	
Thrusters	Bow	2 x 1,000 BHP
	Azimuth (stern)	2 x 2,720 BHP
AHT winches	4 x 300 ts drums	
Chain lockers	4 x 58 m ³	
Shark jaws	1 x 300 ts & 1 x 350 ts Triplex	
Stern roller	5.00 m x 3.00 m	
Accommodation	26	
Firefighting	FIFI 3	
Dynamic Positioning	DP 1	



Vessel names:
Maersk Mariner
Mærsk Master

P-Type (L)

15,600 BHP, 198-204 ts Bollard Pull

LOA/Beam	76.00 m / 17.20 m	
Draft	7.21 m max loaded	
Deadweight	3,393 ts	
Deck capacity	1,300 ts	
Free deck	42.75 m x 14.20 m / 600 m ²	
Base oil	172 m ³	
Brine	314 m ³	
Drill/ballast water	961 m ³	
Dry bulk	315 m ³	
Fresh water	625 m ³	
Fuel	1,112 m ³	
Oil based mud	507 m ³	
Thrusters	Bow	1 x 1,000 BHP
	Azimuth	1 x 1,088 BHP
	Stern	1 x 1,200 BHP
AHT winches	4 x 350 ts drums	
Chain lockers	2 x 136 m ³	
Shark jaws	2 x 300 ts Triplex	
Stern roller	6.00 m x 3.00 m	
Accommodation	23	
Dynamic Positioning	DP1	



Vessel names:
Mærsk Promoter
Mærsk Puncher



P-Type (S)

15,600 BHP, 180 ts Bollard Pull

	Mærsk Pacer	Mærsk Provider
LOA/Beam	73.60 m / 16.40 m	73.60 m / 16.40 m
Draft	6.85 m max loaded	6.85 m max loaded
Deadweight	2,780 ts	2,060 ts
Deck capacity	1,150 ts	500 ts
Free deck	39.90 m x 13.60 m / 530 m ²	28.50 m x 13.60 m / 387 m ²
Base oil	132 m ³	155 m ³
Brine	286 m ³	286 m ³
Drill/ballast water	676 m ³	577 m ³
Dry bulk	280 m ³	280 m ³
Fresh water	557 m ³	471 m ³
Fuel	991 m ³	991 m ³
Oil based mud	523 m ³	523 m ³
Thrusters	Bow 1x1,000 BHP Azimuth 1x1,088 BHP Stern 1x1,200 BHP	Bow 1x1,000 BHP Azimuth 1x1,088 BHP Stern 1x1,200 BHP
AHT winches	4 x 350 ts drums	4 x 350 ts drums
Secondary winch	-	1 x 450 ts drum
Chain lockers	2 x 102 m ³	2 x 142 m ³
Shark jaws	2 x 300 ts Triplex	2 x 700 ts Triplex
Stern roller	6.00 m x 3.00 m	2 x 3.00 m x 3.00 m
Accommodation	23	26
Dynamic Positioning	DP 2	DP 1



Vessel names:
Mærsk Pacer
Mærsk Provider

ASENAV 171 + 172

15,000 BHP, min. 150 ts Bollard Pull

LOA / Beam	84.40 m / 22.00 m
Draft	8.00 m max loaded
Deadweight	4,000 ts
Deck capacity	1,500 ts
Free deck	545 m ²
Base oil	310 m ³ *
Brine	230 m ³ *
Drill/ballast water	1,100 m ³
Dry bulk	300 m ³
Fresh water	560 m ³
Fuel	1,620 m ³ *
Methanol	149 m ³ *
Oil based mud	670 m ³ *
Oil recovery	1,480 m ³ *
Thrusters	Bow 2 x 1,200 BHP Stern 2 x 950 BHP
AHT winches	3 x 400 ts drums
Chain lockers	2 x 254 m ³
Shark jaws	2 x 700 ts Triplex
Stern roller	2 x 3.00 m x 3.00 m
Accommodation	44
Firefighting	Fifi 1
Dynamic Positioning	DP 2
DNV notation Clean Design	



Vessel names:
Mærsk TBN
Mærsk TBN

* Max capacity based on full multipurpose cargo tanks availability.

T-Type

15,300 BHP, 165-181 ts Bollard Pull

LOA / Beam	73.20 m / 20.00 m	
Draft	7.50 m excl. skeg / 8.40 m max incl. 0.90 m skeg aft	
Deadweight	3,500 ts (Mærsk Topper 3,100 ts)	
Deck capacity	1,030 ts	
Free deck	35.80 m x 16.80 m / 600 m ²	
Base oil	129 m ³ *	
Brine	769 m ³ *	
Drill/ballast water	2,317 m ³	
Dry bulk	207 m ³	
Fresh water	618 m ³ *	
Fuel	1,191 m ³ *	
Oil based mud	769 m ³ *	
Thrusters	Bow	2 x 1,200 BHP
	Stern	2 x 670 BHP
AHT winches	3 x 400 ts drums	
Secondary winch	1 x 145 ts (Mærsk Topper)	
Chain lockers	1 x 245 m ³ & 1 x 264 m ³	
Shark jaws	2 x 700 ts Triplex	
Stern roller	2 x 3.00 m x 3.00 m	
Accommodation	30	
	32 (Mærsk Topper)	
Firefighting	FIFI 1	
Dynamic Positioning	DP 2	
DNV notation	Clean Design	



Vessel names:

Mærsk Topper	Mærsk Tracer
Mærsk Trader	Mærsk Tracker
Mærsk Tackler	Mærsk Transporter
Mærsk Tender	Mærsk Traveller
Mærsk Terrier	Mærsk Trimmer

* Max capacity based on full multi purpose cargo tanks availability.

CH-Type

14,400 BHP, 160-173 ts Bollard Pull

LOA/Beam	76.40 m / 17.60 m	
Draft	6.60 m max loaded	
Deadweight	2,350 ts	
Deck capacity	1,360 ts (Mærsk Chieftain 967 ts)	
Free deck	42.20 m x 15.00 m / 630 m ²	
Base oil	178 - 213 m ³ (Mærsk Chieftain n/a)	
Brine	209 m ³ (Mærsk Chieftain n/a)	
Drill/ballast water	1610 - 1700 m ³	
Dry bulk	283 m ³ (Mærsk Chieftain n/a)	
Fresh water	600 m ³	
Fuel	1,850 m ³	
Oil based mud	411 - 620 m ³ (Mærsk Chieftain n/a)	
Thrusters	Bow	2 x 1,200 HP
	Stern	1 x 1,200 BHP
AHT winches	2 x 350 ts drums (Mærsk Chieftain)	
	3 x 250 ts drums	
Chain lockers	2 x 133 m ³	
Shark jaws	2 x 750 ts Karm Fork (Maersk Chieftain)	
	2 x 500 ts Karm Fork	
Stern roller	4.00 m x 2.75 m	
Accommodation	20 (Mærsk Champion)	
	21 (Maersk Challenger and Mærsk Chieftain)	
	35 (Maersk Chancellor)	
Firefighting	FIFI 1 (Maersk Chancellor)	
Standby/Rescue	210 survivors (Maersk Challenger)	
	350 survivors (Maersk Chancellor)	
Dynamic Positioning	DPS 2 (Maersk Chancellor)	



Vessel names:

Mærsk Chieftain	Mærsk Champion
Maersk Challenger	Maersk Chancellor

C-Type

14,400 BHP, 160 ts Bollard Pull

LOA/Beam	69.20 m / 15.50 m	
Draft	6.40 m max loaded	
Deadweight	2,085 ts	
Deck capacity	1,000 ts	
Free deck	35.00 m x 12.40 m / 430 m ²	
Brine	280 m ³	
Drill water	348 m ³ * (Maersk Cutter)	
	420 m ³ * (Maersk Clipper)	
Dry bulk	174 m ³ (Maersk Clipper)	
Fresh water	350 m ³	
Fuel	931 m ³	
Oil based mud	269 m ³	
Thrusters	Bow	2 x 800 BHP
	Stern	2 x 800 BHP
AHT winches	3 x 260 ts drums (Maersk Cutter)	
	3 x 250 ts drums (Maersk Clipper)	
Chain lockers	2 x 35 m ³ & 2 x 45 m ³	
Shark jaws	2 x 350 ts Triplex (Maersk Cutter)	
	1 x 300 ts Triplex (Maersk Clipper)	
Stern roller	5.00 m x 2.50 m (Maersk Cutter)	
	5.00 m x 1.80 m (Maersk Clipper)	
Accommodation	22 (Maersk Cutter)	
	24 (Maersk Clipper)	
Firefighting	FiFi 3	
Dynamic Positioning	DP 1	



Vessel names:
Mærsk Clipper
Mærsk Cutter

* Max capacity based on full multi purpose cargo tanks availability.

R-Type (L)

14,400 BHP, 151 ts Bollard Pull

LOA/Beam	67.00 m / 15.50 m	
Draft	6.46 m max loaded	
Deadweight	1,930 ts	
Deck capacity	1,000 ts	
Free deck	37.00 m x 12.50 m / 460 m ²	
Drill/ballast water	228 m ³	
Fresh water	419 m ³	
Fuel	484 m ³	
Oil recovery	1,000 m ³	
Thrusters	Bow	2 x 600 BHP
	Stern	1 x 800 BHP
AHT winches	3 x 260 ts drums	
Chain lockers	4 x 50 m ³	
Shark jaws	2 x 350 ts Triplex	
Stern roller	5.00 m x 2.50 m	
Accommodation	17	
Firefighting	FiFi 3	
Dynamic Positioning	DP 1	



Vessel name:
Maersk Rover

R-Type (S)

13,000 BHP, 140 ts Bollard Pull

LOA/Beam	6711 m / 15.50 m	
Draft	6.46 m max loaded	
Deadweight	1,946 ts	
Deck capacity	775 ts	
Free deck	29.70 m x 12.80 m / 380 m ²	
	ORO equipment installed	
Drill/ballast water	110 m ³	
Dry bulk	209 m ³	
Fresh water	396 m ³	
Fuel	581 m ³	
Oil based mud	230 m ³	
Oil recovery	721 m ³	
Thrusters	Bow	2 x 600 BHP
	Stern	1 x 600 BHP
AHT winches	1 x 250 ts & 2 x 260 ts drums	
Chain lockers	2 x 38 m ³ & 2 x 45 m ³	
Shark jaws	2 x 400 ts Karm Fork	
Stern roller	5.00 m x 2.50 m	
Accommodation	27	
Firefighting	FiFi 2	



Vessel name:
Maersk Retriever

HUSKY-Type

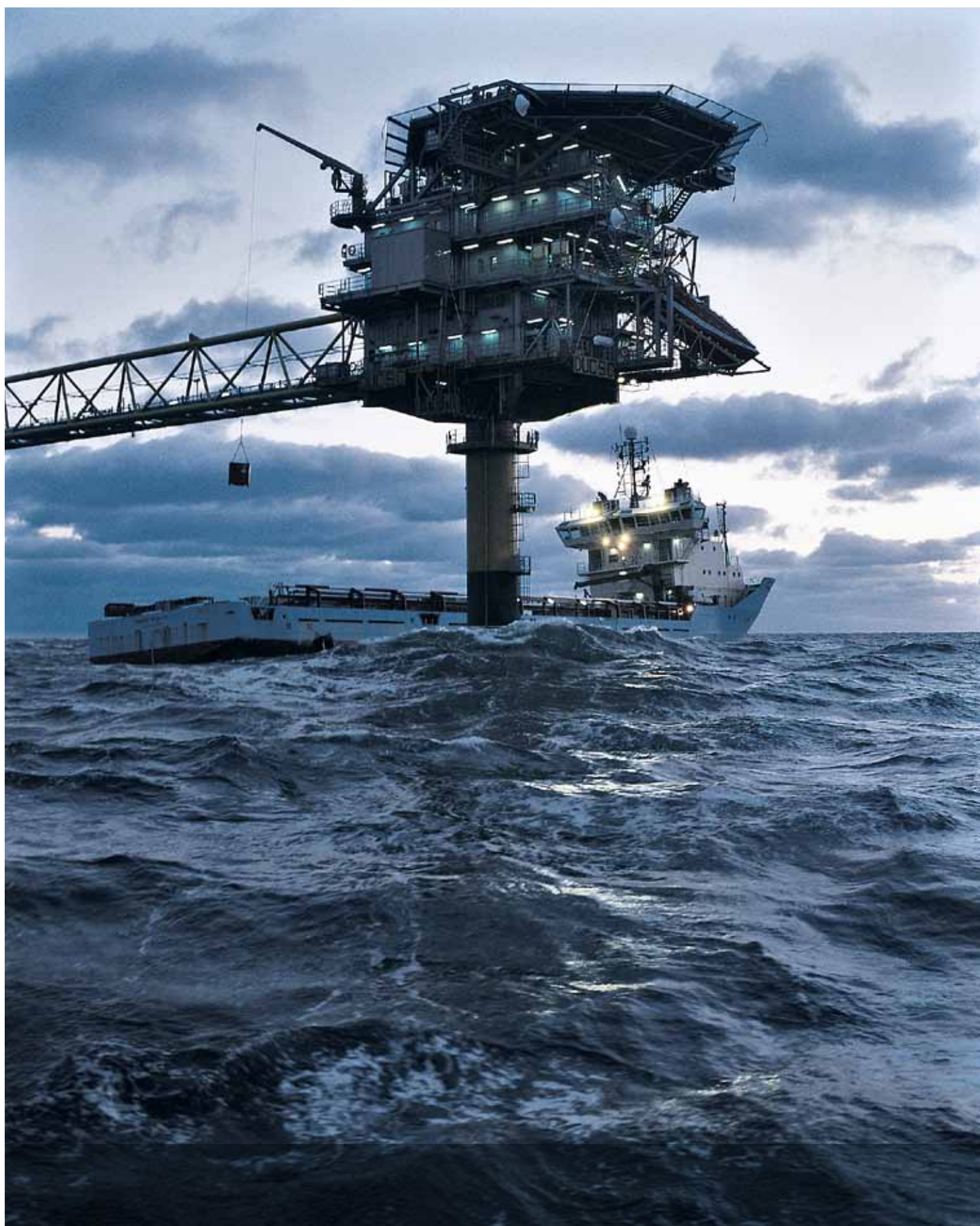
10,880 BHP, 120-127 ts Bollard Pull

LOA/Beam	71.50 m / 16.00 m	
Draft	6.25 m max loaded	
Deadweight	2,150 - 2,500 ts	
Deck capacity	1,250 ts	
Free deck	38.00 m x 12.50 m / 475 m ²	
Base oil	320 - 329 m ³	
Brine	204 m ³	
Drill/ballast water	505 - 739 m ³	
Dry bulk	276 m ³	
Fresh water	256 - 640 m ³	
Fuel	504 - 876 m ³	
Oil based mud	320 - 329 m ³	
Thrusters	Bow	2 x 800 BHP
	Stern	1 x 800 BHP
AHT winches	3 x 275 ts drums	
Chain lockers	4 x 32 m ³	
Shark jaws	2 x 500 ts Karm Fork (Maersk Placentia)	
	2 x 400 ts Karm Fork (Maersk Chignecto)	
	1 x 300 ts Triplex (Maersk Gabarus)	
Stern roller	4.50 m x 2.00 m	
Accommodation	21 (Maersk Placentia)	
	22	
Firefighting	FiFi 1 (Maersk Chignecto)	
Standby/Rescue	150 survivors (Maersk Gabarus)	
	220 survivors (Maersk Chignecto)	
Dynamic Positioning	DP1 (Maersk Chignecto)	



Vessel names:
Maersk Chignecto
Maersk Placentia
Maersk Gabarus

Platform Supply Vessels



N-Type

4,300 DWT, 910 m² deck

LOA/Beam	90.15 m / 18.80 m	
Draft	7.00 m max loaded	
Deadweight	5,121 ts	
Deck capacity	2,300 ts	
Free deck	57.00 m x 16.00 m / 910 m ²	
Base oil	460 m ³	
Brine	1,080 m ³	
Drill/ballast water	2,240 m ³	
Dry bulk	396 m ³	
Fresh water	1,100 m ³	
Fuel	1,450 m ³	
Oil based mud	810 m ³	
Oil recovery	1,000 m ³	
Main engines	10,400 BHP	
Thrusters	Bow	1 x 1,200 BHP
	Azimuth	1 x 1,200 BHP
	Stern	2 x 800 BHP
Accommodation	36	
Standby/Rescue	360 survivors	
Firefighting	FiFi 1	
Dynamic Positioning	DP 2	
DNV notation	Clean Design	



Vessel name:
Mærsk Nexus

N-Type

4,000 DWT, 720 m² deck

LOA/Beam	82.50 m / 18.80 m	
Draft	6.23 m max loaded	
Deadweight	4,000 ts	
Deck capacity	2,800 ts	
Free deck	45.00 m x 16.00 m / 720 m ²	
Base oil	243 m ³	
Brine	833 m ³	
Drill/ballast water	1,146 m ³	
Dry bulk	396 m ³	
Fresh water	733 m ³	
Fuel	1,539 m ³	
Oil based mud	663 m ³	
Oil recovery	1,030 m ³	
Main engines	9,600 BHP	
Thrusters	Bow	1 x 1,200 BHP
	Azimuth	1 x 1,200 BHP
	Stern	2 x 800 BHP
Tow winch	100 ts single drum	
Accommodation	38	
Stand-by	360 survivors	
Firefighting	FiFi 1	
Dynamic Positioning	DP 1	



Vessel names:
Maersk Nascopie
Maersk Norseman

F-Type

4,600 DWT, 907 m² deck

LOA/Beam	82.50 m / 18.80 m	
Draft	6.23 m max loaded	
Deadweight	4,600 ts	
Deck capacity	2,900 ts	
Free deck	58.50 m x 15.50 m / 907 m ²	
Base oil	304 m ³	
Brine	217 m ³	
Drill/ballast water	1,365 m ³	
Dry bulk	396 m ³	
Fresh water	757 m ³	
Fuel	1,452 m ³	
Methanol	170 m ³	
Oil based mud	662 m ³	
Main engines	7,200 BHP	
Thrusters	Bow	1 x 1,200 BHP
	Azimuth	1 x 1,200 BHP
	Stern	2 x 800 BHP
Accommodation	22 (Mærsk Forwarder)	
	26	
Dynamic Positioning	DP 2 / DP 1	



Vessel names:

Mærsk Fighter
Mærsk Forwarder
Mærsk Frontier

Mærsk Feeder
Mærsk Finder
Mærsk Fetcher

V-Type

4,200 DWT, 940 m² deck

LOA/Beam	89.10 m / 18.80 m	
Draft	6.20 m max loaded	
Deadweight	4,200 ts	
Deck capacity	2,600 ts	
Free deck	58.00 m x 16.20 m / 940 m ²	
Base oil	190 m ³	
Brine	1,100 m ³	
Drill/ballast water	1,000 m ³	
Dry bulk	396 m ³	
Fresh water	1,120 m ³	
Fuel	1,584 m ³	
Oil based mud	690 m ³	
Oil recovery	1,000 m ³	
Main engines	10,400 BHP	
Thrusters	Bow	1 x 1,200 BHP
	Azimuth	1 x 1,200 BHP
	Stern	2 x 900 BHP
Accommodation	36	
Dynamic Positioning	DP 1	



Vessel names:

Mærsk Vega
Mærsk Ventura

Field and Subsea Support Vessels



R-Type

10,440 BHP, 110 ts Bollard Pull

LOA/Beam	105.80 m / 20.00 m	
Draft	9.10 m max loaded	
Deadweight	8,071 ts	
Drill/ballast water	1,870 m ³	
Fresh water	700 m ³	
Fuel	IFO380 1,667 m ³ + G.O. 748 m ³	
Thrusters	Bow	1 x 1,200 BHP
	Azimuth	1 x 1,000 BHP
	Stern	2 x 1,200 BHP
AHT winch	60 ts	
Accommodation	68	
Cable tank capacity	2 x 2,500 ts / 2 x 1,950 m ³	
	2 x 500 ts / 2 x 450 m ³	
Helideck	Max. 19.5 m 'D' value	
	Max. 9.3 ts take-off weight	
Dynamic positioning	DP 2	
Crane	50 ts at 1,500 m water depth (Mærsk Responder)	
	30 ts at 1,500 m water depth (Mærsk Recorder)	
	Active heave compensated	
A-Frame	60 ts	



Vessel names:
Mærsk Recorder
Mærsk Responder



A-Frame

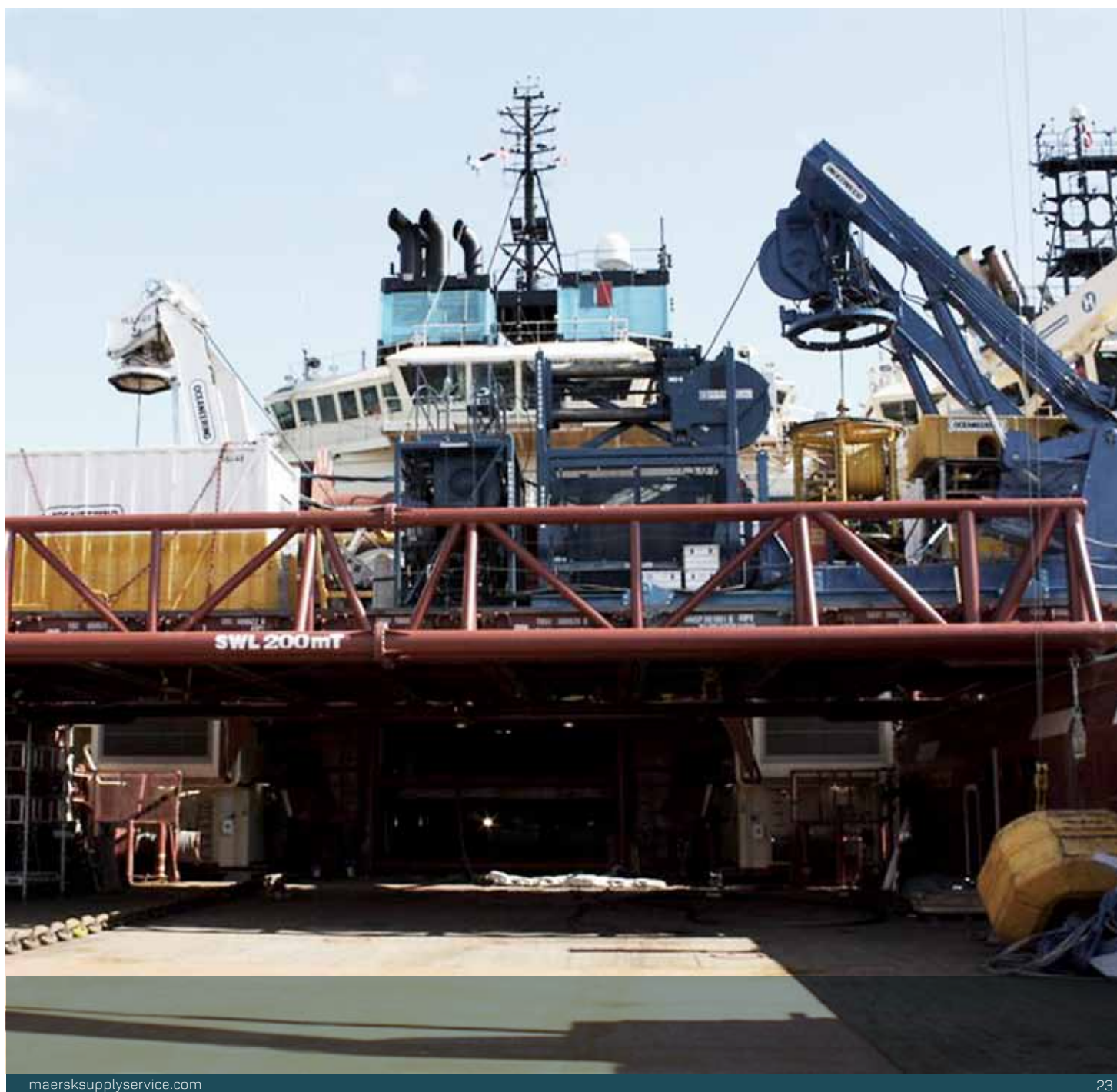
Lifting capacity	260 ts at sea state 5 (HS = 3.0 m) over the stern, 210 ts in inboard position
Outreach	13 m outboard and 9 m inboard (from centre of pivot points)
Width	12 m or 17 m between legs (adjustable) (between centre of pivot points)
Maximum lifting height	15.20 m in vertical position
Main power	440 V / 60 Hz or 660 V / 60 Hz
Classification roles	Lloyd's Register of Shipping
Can be fitted on A-Type and B-Type vessels	



ROV/Mezzanine decks

Maersk Supply Service has developed modularized mezzanine decks which can be installed over the work deck on anchor handling vessels. The decks enable placement of two large deepwater work ROV's without interfering with vessels anchor handling and towing capabilities. The newest mezzanine decks can be pre assembled and installed on the vessels without need for class interference or load test, within a timeframe of 6 hours and with a loading capacity of 200 ton SWL.

The modularized design enables the decks to be packed in four ISO 40 feet units which can be transported as normal containers by truck, vessel or aircraft.





Headquartered in Copenhagen, Maersk Supply Service is represented globally with offices in Aberdeen, St. John's, Rio de Janeiro, Cairo, Luanda, Lagos and Perth.

For more information please visit our web site at maersksupplyservice.com



This brochure is intended for general information only.
Maersk Supply Service makes no warranties about accuracy or completeness of any information contained herein.